

THE SAFETY OF **chipolino** PRODUCTS AND THE MATERIALS USED FOR THEIR PRODUCTION IS GUARANTEED AND CERTIFIED IN LABORATORIES ACCORDING TO EN STANDARDS.

INSTRUCTION MANUAL FOR USE OF BABY TWIN STROLLER “RIMINI”

RIMINI



PLEASE READ CAREFULLY THIS INSTRUCTION MANUAL AND KEEP IT IN A SAFE PLACE FOR FUTURE REFERENCE! IT CONTAINS IMPORTANT INFORMATION, INSTRUCTIONS AND RECOMMENDATIONS FOR THE STROLLER AND ITS SAFE USAGE

This stroller is intended for use of two babies aged 0+ months, weighing up to 15 kg per child.

Each seat is equipped with a 5 point harness and a canopy which can be adjusted. The backrests are separately adjustable in four positions and the leg rests may be fixed in two positions.

The stroller is manufactured according to the requirements of the Product Safety Directive 2001/95/EU of the European Parliament and The Council and with European standard EN 1888 "Child care articles. Wheeled child conveyances. Safety requirements and test methods" and the regulations of national legislation.

ATTENTION! Your child will be protected only if you follow the guidelines and recommendations in this instruction manual! Pay special attention to the warnings and secure all necessary safety precautions in order to prevent the risk of injury or impairment and guarantee your child's safety! You are solely responsible for the safety of your child, if you don't follow exactly the instructions and safety recommendations in this manual! Make sure that everybody who uses this stroller has read and understood this manual!

SAFETY REQUIREMENTS AND WARNINGS!

1. **ATTENTION! Never leave your child unattended! Always keep child in view while in product!**
2. **The use for a child weighing more than 15 kg per child or 30 kg for both children, may cause overloading and make the construction unstable, causing the stroller to tip over and injure the children!**
3. **This stroller is intended for use for two children at a time! Use only for two children at a time! It is dangerous to use the stroller for two children with a big difference in their weight and age!**
4. **The sitting position of the reclining seats is to be used only for a children at least 6 months old!**
5. **The maximum load for the storage basket is 5 kg. Do not overload the storage basket! Do not use storage basket as a child carrier!**
6. **For newborn babies the most lying position of the backrests is recommended. Always attach the canopies to the seats backrests in order to prevent possible sliding or falling out of the stroller!**
7. **The backrests must be adjusted only by adult! Do not adjust the backrest while the children are in the stroller!**
8. **ATTENTION! DO NOT PUT ADDITIONAL MATTRESSES IN THE STROLLER'S SEATS.**
9. **Always keep the front bumper closed when children are in the stroller! It is dangerous to lift the stroller by the bumper!**
10. **ATTENTION! Always use the seat belts in order to avoid serious injury from falling or sliding out. After fastening buckles, adjust the safety belts in such a way so that they snug fit around your child, preserve their length unchanged and are not twisted. Periodically check to ensure that the seat belt is securely attached to the stroller frame as well as securely fastened. The seat belt straps must not be damaged, worn out or twisted!**
11. **Do not leave bags or other items in the stroller with the child or on the canopy! Every load attached to the handle, bumper, and backrest or on the side of the stroller will affect its stability. Do not overload the stroller! If you do, it may tip over and injure the child.**
12. **Do not place items with long strings around your child's neck and do not attach additional strings to toys to avoid strangulation!**
13. **Extra pads or pillows placed on the seat will impede the proper use of the safety harnesses and will reduce the safety and stability of the child in the stroller!**

14. The folding, assembly and unfolding must be performed by adults only!
15. Do not allow children younger than 3 years near the stroller during assembly of the product. Keep children away from disassembled parts in order to avoid injury.
16. Before each use check the fixings of the canopies, backrests and bumper. Discontinue using your stroller if you find damaged or missing parts!
17. Check the parking device before each use! Activate the parking device if the stroller is not in motion and especially on slopes or if you put the children in or out of the stroller!
18. Make sure the stroller is fully unfolded and all locking mechanisms are engaged before placing the children in the stroller in order to prevent sudden folding of the stroller.
19. Fold and unfold carefully in order to avoid finger entrapment! Make sure the stroller is fully erected and all locking mechanisms are engaged before using your stroller!
20. Never lift, fold or make any adjustments or repairs to the stroller while the child is in it! The stroller may slip off your hands, tip over or fold suddenly!
21. Keep children away from moving parts.
22. Do not allow your children to stand in the stroller or hang on it!
23. Do not allow your child to play with the stroller! It is dangerous to let children or animals play or run close to or beneath the stroller!
24. The stroller must be used only at a walking speed. Do not use while jogging, skating, running, etc.
25. Never use stroller on stairs or escalators. You may suddenly lose control of the stroller causing your child to fall out and be injured. Use extra care when going up or down a step or curb.
26. **ATTENTION! KEEP AWAY FROM FIRE!** Do not use near pools, hot surfaces or areas that may be hazardous to a child! In case of flame ignition, the caregiver must quickly take the children out of the stroller.
27. Do not make any changes or modifications to the stroller's construction, because they may endanger your child's safety! Only use spare parts or other components, which are recommended or supplied by the producer! In the contrary case the producer is not responsible for the product's safety. In case of problems contact the dealer or an authorized repair service for advice and/or repair!
28. When the stroller is folded, keep it in a safe place away from children! Otherwise the child can push the stroller and injure himself.
29. Do not store in wet environment for longer periods of time!
30. Make sure the stroller is fully dry before using it.
31. Use the stroller only for what it is intended!
32. Do not place items on top of the stroller or carry while storing or transporting them, because it may damage the products.
33. The plastic packaging of the product must be kept out of the reach of babies and children at the time of and after unpacking. In this way you will avoid the risk of strangulation and/or asphyxiation (choking) caused by entanglement of the packaging around the child or external blocking of the respiratory tract through the child's nose or mouth!



ASSEMBLY AND FUNCTIONS OF THE STROLLER

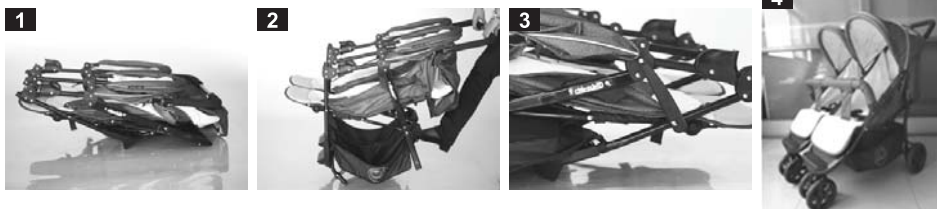
This stroller is supplied partially assembled. In order to complete the assembly, you don't need any tools.

Follow exactly the instructions given and check the pictures. Please, note that in most cases after the completion of an operation you will hear a clicking sound.

IMPORTANT! After each operation, make sure that you have followed the instructions correctly and the fixing is stable.

ATTENTION! Do not allow children younger than 3 years near the stroller during the assembly or disassembly, in order to prevent the risk of injury or swallowing of small parts! Keep your hands from finger entrapment, especially during folding or unfolding the stroller.

UNFOLDING THE STROLLER



Place the stroller on even surface (fig.1) and release the hook at the side of the stroller (fig. 2). Pull up the handle with your hand, as shown in fig.3, until you hear a click (fig. 4). Make sure that the stroller is fixed.

ASSEMBLY OF FRONT WHEELS



In order to install the front wheel (fig.5), align them with the front tube (fig. 6) and press until you hear click (fig.7). Check if the wheels are well fixed by trying to pull them out.

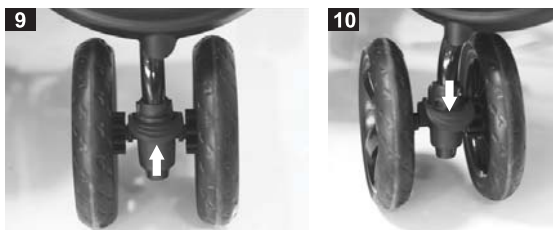
REMOVAL OF FRONT WHEELS



Squeeze the two pegs on end of front tubes and pull out the wheel in order to remove it (fig. 8).

Repeat the same actions to remove the other wheel.

SWIVEL AND STRAIGHT MOTION OF THE FRONT WHEELS

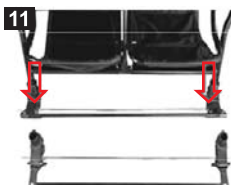


The front wheels can swivel (at 360°) or move straight.

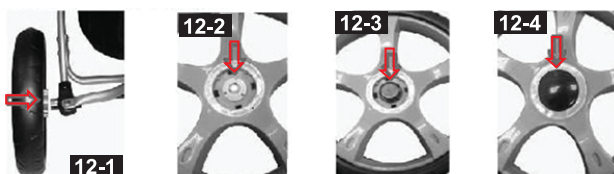
Lift the lever and the front wheels will move only straight (fig.9). Press down the lever, so the wheels will swivel (fig.10).

ATTENTION! When you move the stroller on uneven surfaces, it is better to fix the wheels in straight motion! For even surfaces it is recommended to use the swivel function. If you follow these recommendations, the wheels will move easily and will wear out less.

ASSEMBLY OF REAR WHEELS



Align the rear axle in such direction that the parking pedal is facing backwards (fig. 11). Press the axle until the pins on rear tubes go in the openings on the axle and you hear a click. Make sure the axle is correctly attached to the stroller.



Place the rear wheel to the end of rear axle (fig.12-1). Fix each wheel with a plastic washer (fig. 12-2). Close the washer with a small cap (fig. 12-3). Finally put the wheel cover (fig. 12-4).

REMOVAL OF REAR WHEELS

To remove the rear wheels, repeat the assembly steps in reverse order.

PARKING DEVICE



The parking device is located at the rear wheels. Press down the parking device pedal in order to engage the parking device (fig.13). Make sure the parking device is engaged and the stroller cannot be moved. Lift the parking device pedal with your foot in order to release it (fig. 14).

ATTENTION! When the stroller is not in motion, always use the parking device! Never leave the stroller on a slope, even if the parking device is engaged if there is a baby in it!

ADJUSTING THE BACKREST

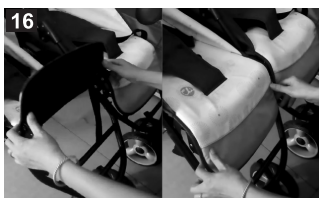


The backrest may be adjusted in four positions. In order to lower the backrest, pull up the U-shaped mechanism at the backrest (fig.15). Simultaneously, press the backrest down. Release the mechanism in order to fix the backrest in desired position. You will hear a click when the position is fixed.

In order to raise the backrest, just push it up with your hand. Make sure the backrest position is fixed.

ATTENTION! Do not adjust the backrest when there is a child in the seat. If you still want to adjust the position, the child must be in sitting position and not lean on the backrest.

LEG REST

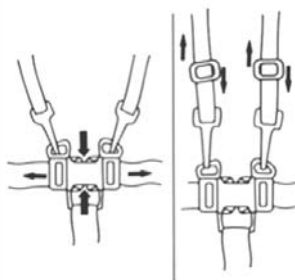


To move the leg rest in lower position, press the two levers at the bottom of leg rest and pull down (fig.16). To put the leg rest in upper position, just push the leg rest up with your hand (fig.16). After each adjustment, make sure that both ends of the leg rest are at the same level.

SAFETY HARNESS



A



B

ATTENTION! Always use the safety belts when the baby is inside the stroller. Join the loose ends of the shoulder and waist straps, as shown. Insert them in the central buckle until you hear a click. Adjust the length of the belts according to the baby's growth. In order to unfasten the harness, squeeze the two ends of waist belts and pull out the belts.

Always use the seat belts in order to avoid serious injury from falling or sliding out. After fastening buckles, adjust the safety belts in such a way so that they snug fit around your child, preserve their length unchanged and are not twisted. Periodically check to ensure that the seat belt is securely attached to the stroller frame as well as securely fastened. The seat belt straps must not be damaged, worn out or twisted!

ATTENTION! Babies under 6 months must be put in the stroller with most lying position of the backrest! Before placing the babies in the stroller, you must split the shoulder and waist straps and put them to the two sides of the seat and cover them with thin pad or blanket.

ASSEMBLY OF FRONT BUMPER



To install the bumper, first open the clamps at the two ends of the bumper and put it on the front tubes, as shown in fig. 18 and close the clamps. To remove the bumper, open its clamps and take it out.

USING THE CANOPY



The canopy may be opened and closed by simply using your hand (fig.19).

ASSEMBLY OF PLASTIC FOOT RESTS



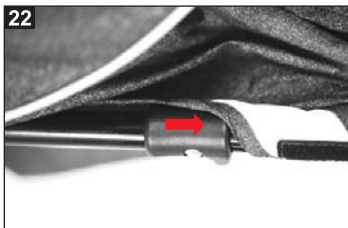
Put the plastic footrests, in order to cover the front tubing of the stroller. Align them as shown in fig.20 and press until they click into place.

FOOTCOVERS



The stroller has a separate footcover for each seat. Put the footcover on the seat and fasten it with the button - fig.21.

FOLDING THE STROLLER



Before folding the stroller, remove the bumper bar, position the front wheels for swivel motion and close the canopies. Stay at the side of the handle. Pull the two folding levers up (fig. 22). Without releasing the handle folding levers, press the handle down (fig.23), until stroller is fully folded. Fix the folded stroller with the hook (fig.24).

ATTENTION! Do not fold the stroller if there is a child in it!

CARE AND MAINTENANCE GUIDELINES

1. Regularly check all locking mechanisms, parking device, safety harnesses and buckles, joints and fixing mechanisms to make sure that they function properly and are not damaged or worn out.
2. Should you find loose, torn or damaged parts, they need to be repaired or replaced.
3. Brakes and wheels wear out faster than other parts. Replace them when necessary.
4. Regularly oil the driving mechanisms. Renew the rivets when necessary. It is recommendable to use silicone oil or silicone spray for oiling.
5. Dirty metal or plastic parts impede the normal function of your stroller. Clean your stroller regularly and after that oil it.
6. Clean the fabrics, plastic parts and metal parts of the stroller with damp cotton cloth or sponge and water or mild soap. The fabric (except the canopy) can be removed and hand washed at 30°C. Do not machine wash.
7. Do not use abrasive, bleach, ammonia, spirit or other aggressive detergents.
8. After cleaning always leave the stroller to fully dry and after that use it or store it.
9. Always store your stroller indoors. The effect of the environment – sea air, road covered with salt, acid rains, etc., as well as storing in the open air lead to corrosion.
10. Do not store your stroller in wet environment. In case you stroller has been stored in wet environment, you must first unfold it, wipe it with a dry cloth and leave it to dry out. Mold may appear on your stroller if it was stored wet.
11. Heavy sun exposure makes the plastic parts wear out faster and the fabrics fade out.
12. Do not put other items on the stroller when you store it regardless of whether it is folded or not, because you may damage it.
13. In case of problems with the normal use of the stroller, please contact the authorized repair service for advice or repair.
14. A full check from the technician is recommended if you have stored the stroller for a long period of time or want to use it for another child.

Fabric content:

Outer: 100% polyester

Filling: 100% polyester



